

The background of the slide features a close-up, high-contrast photograph of several mint leaves. The leaves are arranged in a fan-like pattern, with their serrated edges and prominent veins clearly visible. The lighting creates a range of green tones, from deep forest green to lighter, almost white highlights on the leaf surfaces.

# MINTHIS

## Lófos Property Proposal

VILLA C1





## ΛÓΦΟΣ / ΛΟΦΟΣ

Named after and situated at the highest point of the resort, the calmness that you feel here is extraordinary. This new neighbourhood is the latest launch at Minthis, perched at the highest point of the resort, offering 360-degree panoramic views that stretch across mountain landscapes, manicured golf greens and the Mediterranean Sea beyond. Known for its seamless blend of nature and luxury, this elevated community includes a stunning selection of residences, spacious villas, and elegant apartments.

Each property is designed to capture the essence of modern Mediterranean living, with open-plan layouts, expansive terraces, and floor-to-ceiling windows that maximize the spectacular views. Residents enjoy access to exclusive amenities such as infinity pools, private gardens, and tailored concierge services, all set against the serene backdrop of Minthis's natural beauty. This premier neighbourhood combines sophisticated architecture with the tranquillity of its elevated setting, creating a truly unique living experience.

The simple and elegant designs, combined with the traditional touches, are the essence of Minthis creating a cosy feeling that is both authentic and real.



# DESIGN PRINCIPLES

## MINDFUL LIVING

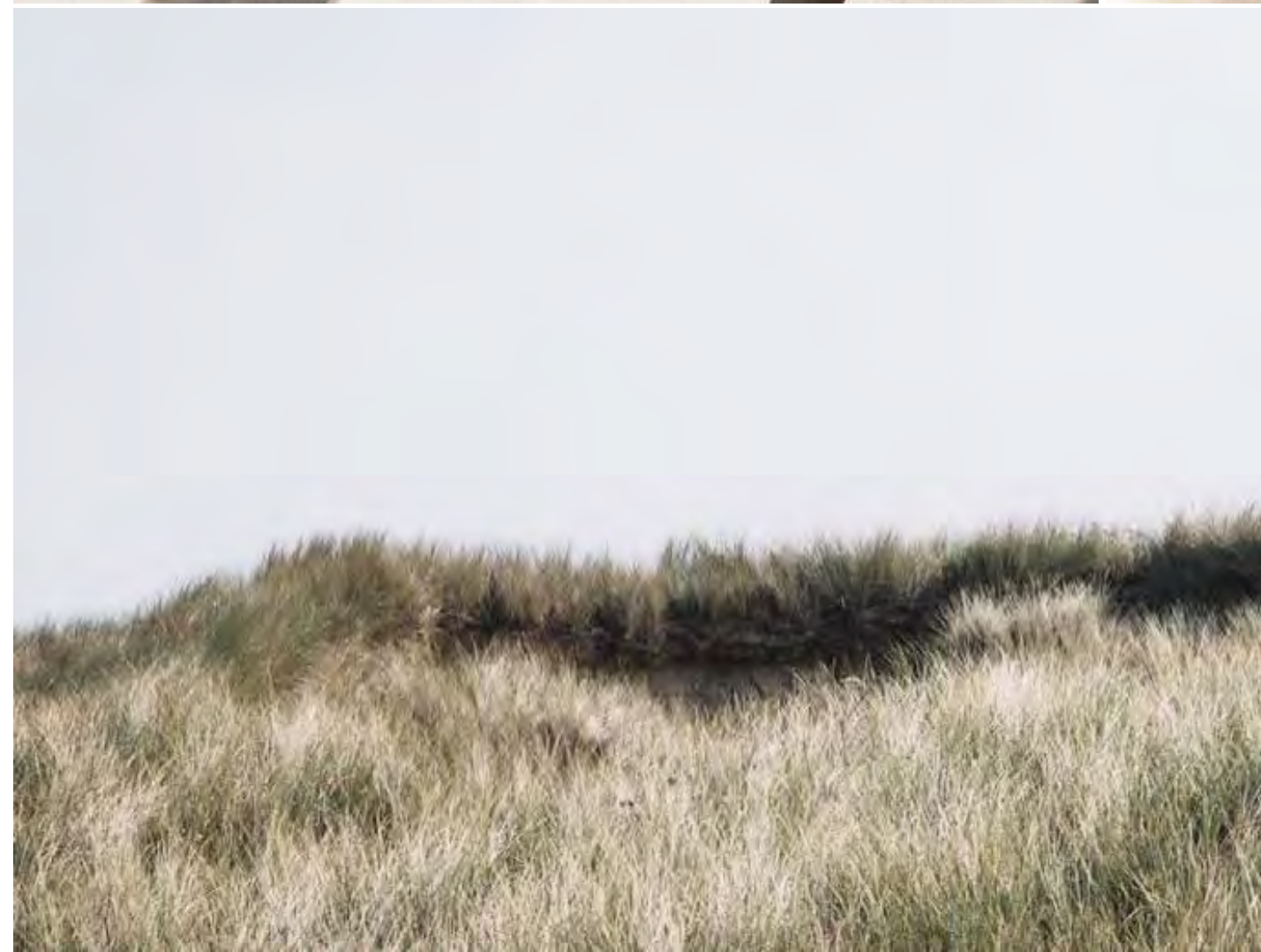
/ Mindful living encourages a deeper sense of purpose, balance, and harmony, fostering a lifestyle that is both fulfilling and sustainable. /

## OUTSIDE IN

/ Reconnect with nature and blend with the landscape, these are the guiding principles of the architecture./

## LUXURY MEETS NATURE

/ A harmonious blend of opulence and the natural world, creating spaces where sophistication and serenity coexist. A lifestyle that values the beauty and tranquillity of natural environments while enjoying the highest standards of comfort and elegance. /



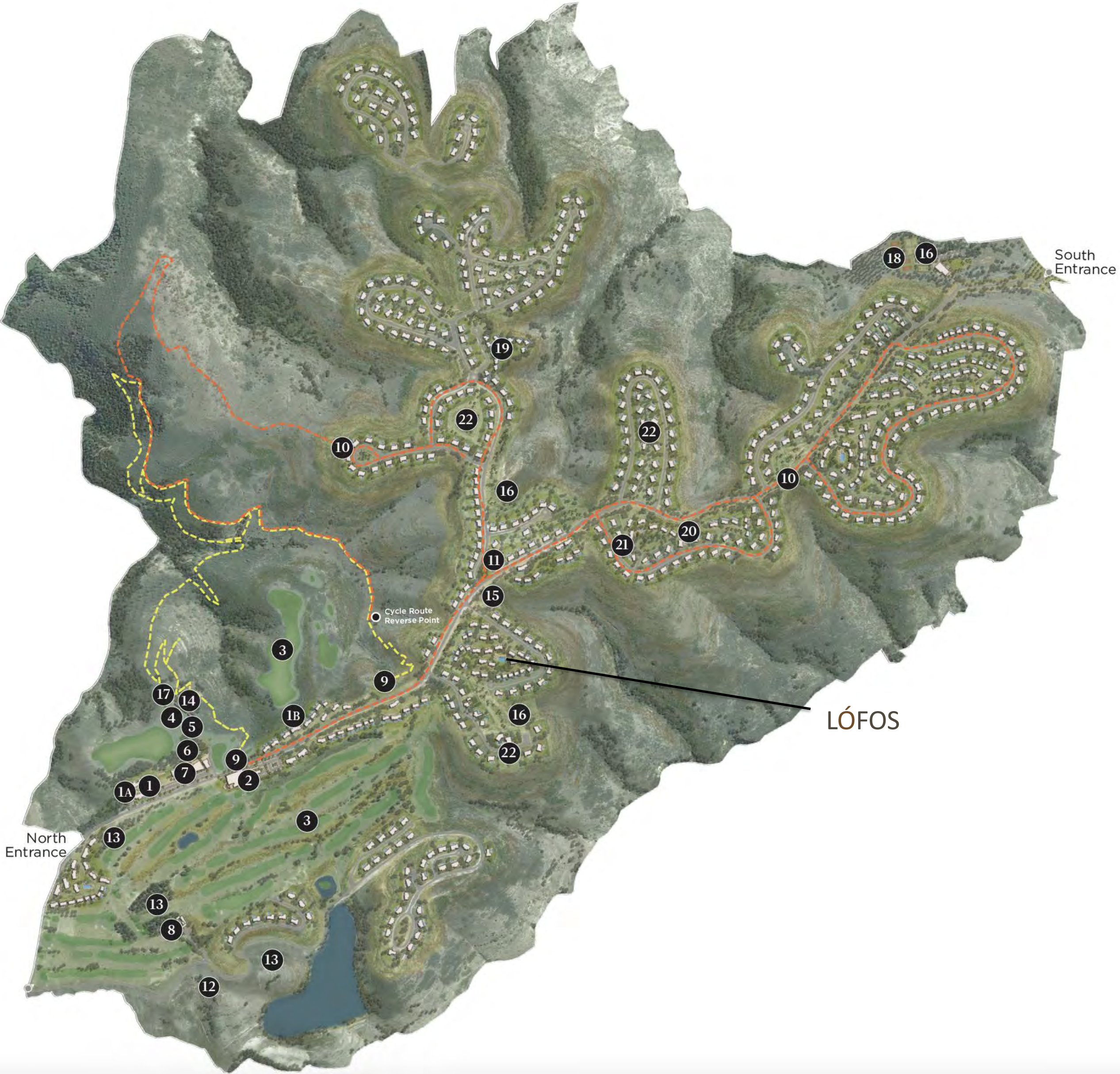


# MINTHIS MASTERPLAN



- 1 Resort Reception
  - 1A. The Suites
  - 1B. Ezousa Sulttes
- 2 Clubhouse
- 3 Golf Course
- 4 Driving Range
- 5 Golf Academy
- 6 Wellness Spa
- 7 The Plateia
  - Lounge Restaurant
  - Bar
  - Sales Office
  - Cava - Boutiques
- 8 Monastery
- 9 Nature Trail
- 10 Cycling Route
- 11 Herb Garden

- 12 Organic Farm
- 13 Vineyards
- 14 Outdoor Yoga Deck
- 15 Outdoor Fitness Park
- 16 Children's Outdoor playground
- 17 Stargazing
- 18 Sports Ground
- 19 The Plateau Villas
- 20 The Ridge Villas
- 21 Ridge Green Villas
- 22 Residences





# LÓFOS ARIEL VIEW





THE VIEWS



SEA

MOUNTAIN

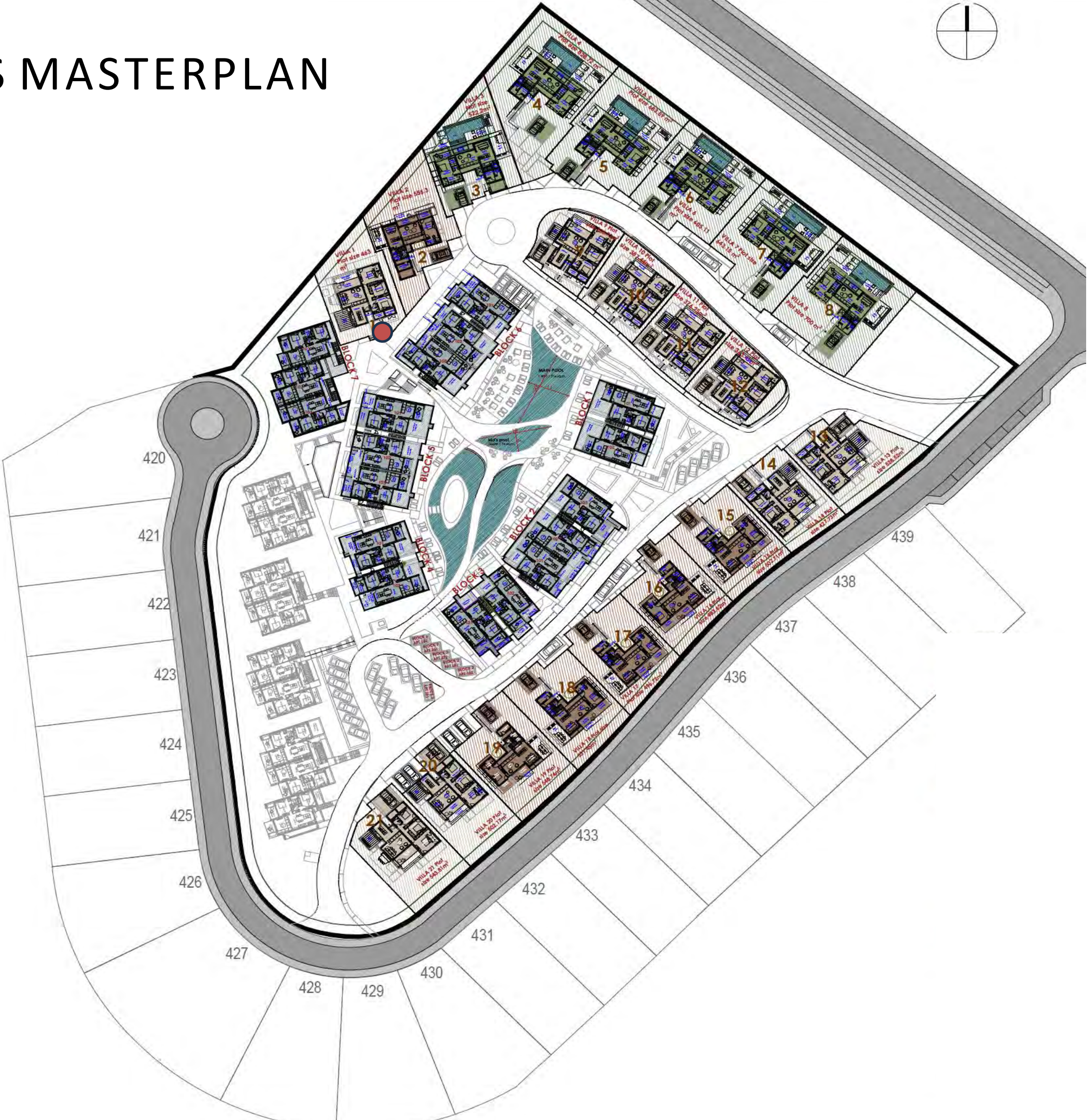


GOLF

# THE APARTMENTS



# LÓFOS MASTERPLAN

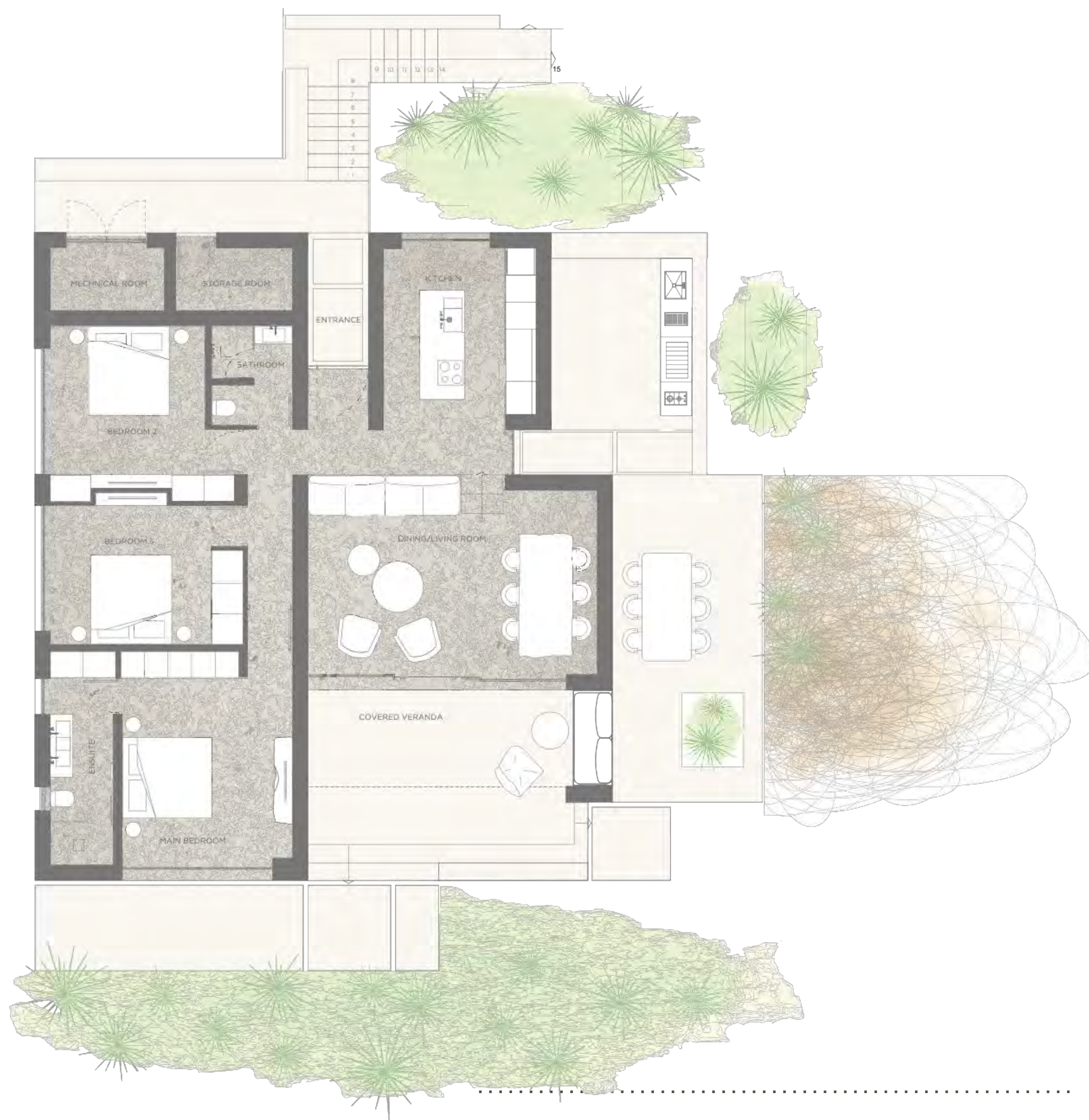


VILLA C1

## UNIT TYPES

- APARTMENTS - 44 UNITS
- DUPLEX - 10 UNITS (2 LEVELS)
- SINGLE LEVEL VILLAS - 10 UNITS
- VILLA - 6 UNITS (2 LEVELS)
- RESIDENCES - 6 UNITS





# VILLA C1

SINGLE LEVEL

PLOT SIZE: 463 m<sup>2</sup>

BEDROOMS: 3

ENSUITE: 1

BATHROOMS : 1

TOTAL COVERED AREA: 161 m<sup>2</sup>

COVERED AREA: 144 m<sup>2</sup>

COVERED VERANDAS: 17 m<sup>2</sup>

---

**PRE-LAUNCH PRICE €1,160,000 +VAT**

---



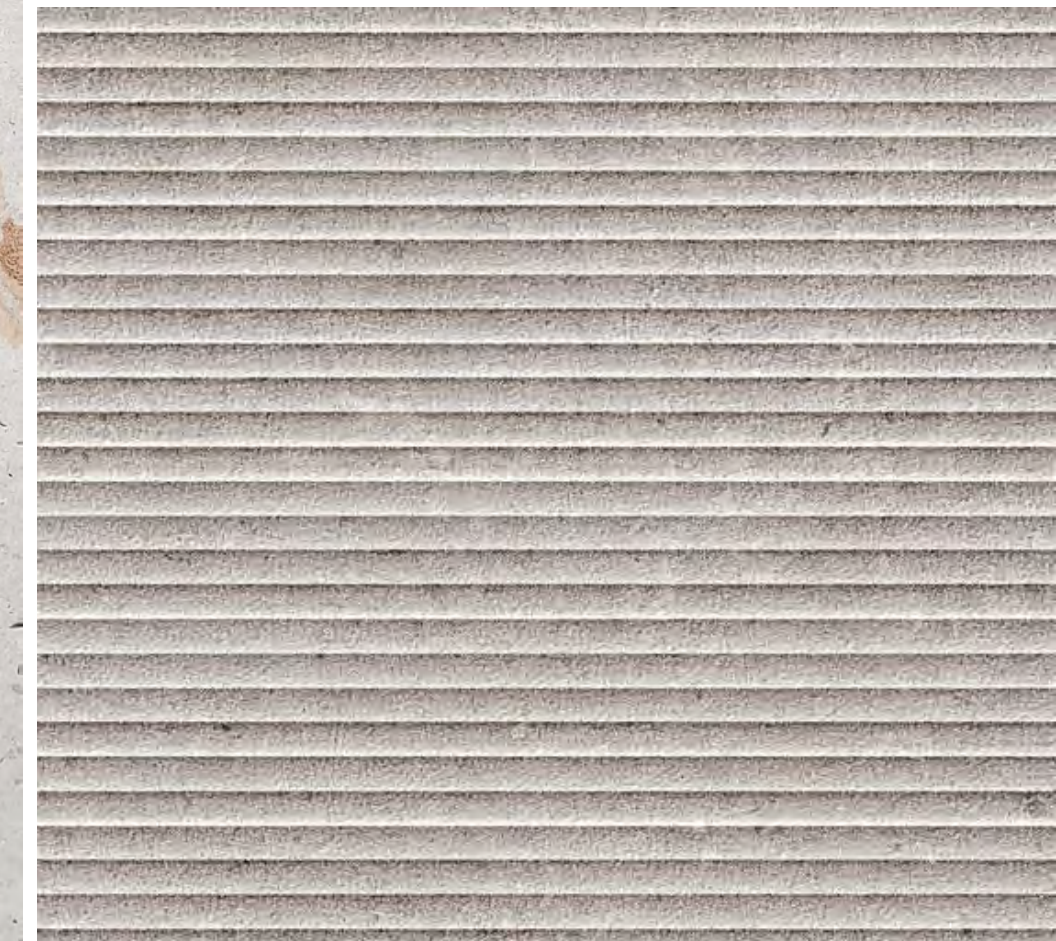
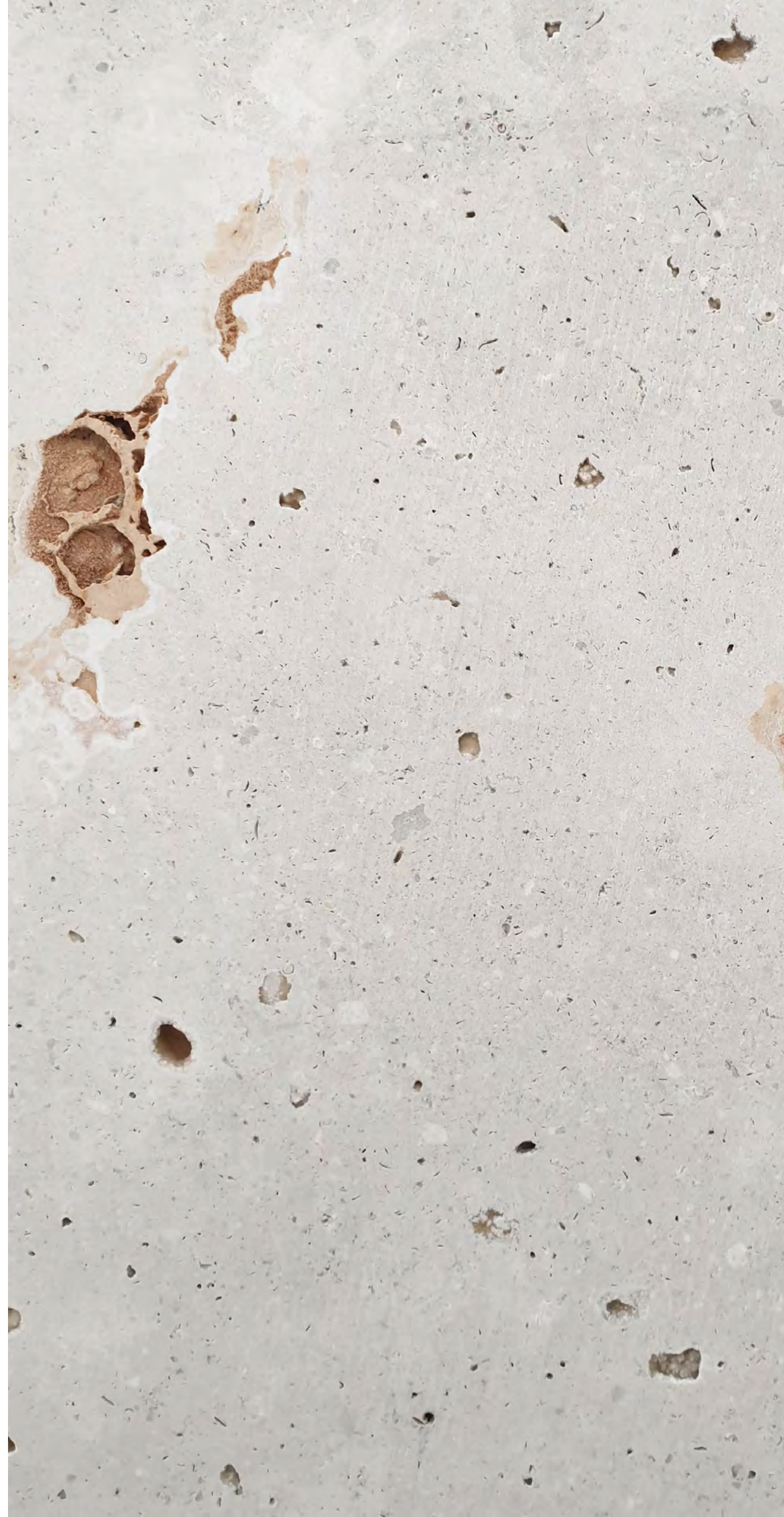
# BUNGALOW





# Material Matters

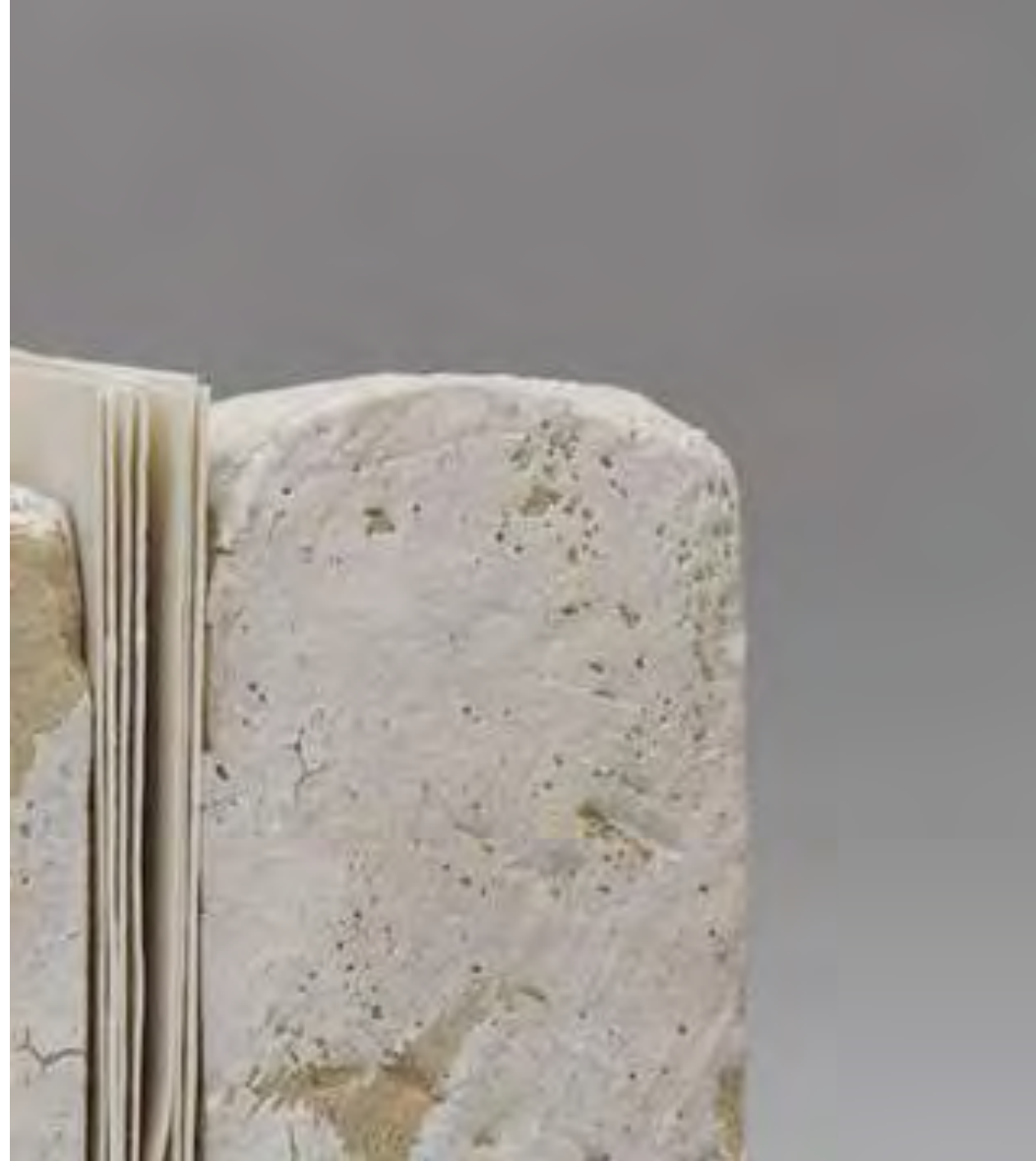
Authentic, local, natural and calming.





# The Fine Elements

Soothing colours, soft textiles, elegant details.





# THE RESORT





# MINTHIS

A tranquil retreat where time is a treasure to be spent recharging and reconnecting. Located in the wine producing region of Paphos and part of a Natura 2000 environmentally protected site, nature is an ever present element that is embedded in our DNA.

The pioneering architecture is light-filled and energising. The social spaces and award-winning homes are rooted in local culture but contemporary in design, nestling seamlessly into the natural landscape and maximizing views from every angle.



# THE TEAM

Minthis is the result of valued partnerships between Pafilia and several world-renowed authorities in their field.



PAFILIA



ATKINS



WOODS BAGOT



CHURCH OF CYPRUS



MACKENZIE & EBERT



WATG



# LIFE AT MINTHIS

THE PLATEIA : A PLACE OF COMMUNITY AND  
ENERGY





# DINING DESTINATIONS

LOCALLY SOURCED MENUS



Amaracus



Bar-M



Clubhouse



# THE GALLERIES

## STORES AND BOUTIQUES



MINTHIS



# MINTHIS Spa



The destination Spa is now open offering a unique wellness experience with a philosophy that focuses on the restorative power of local herbs and minerals, blended with ancient Greek healing methods and contemporary sciences to rejuvenate, relax and restore.

- 25m heated indoor pool
- Hydropool
- Thermal Suites
- State-of-the-art Gym
- Yoga Studio
- Sensory Courtyard
- 8 Treatment rooms
- Manicure & Pedicure
- Hair Salon

MINTHIS





# CHAMPIONSHIP GOLF

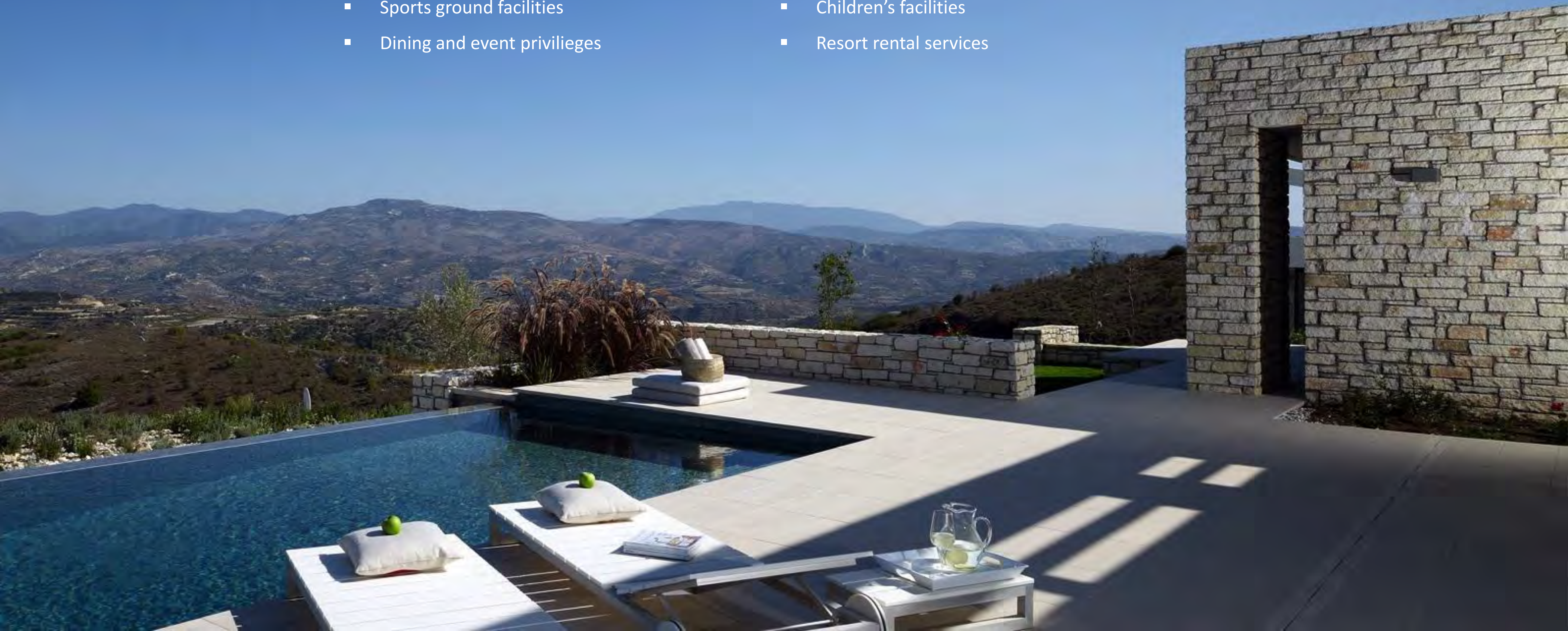
A beautiful and challenging par 72 18-hole  
golf course with driving range.  
The first course in Cyprus  
to receive GEO certification.





# SERVICES & HOMEOWNER BENEFITS

- Access to award-winning Minthis Spa
- 3 years Golf Club membership
- Sports ground facilities
- Dining and event privileges
- Full concierge services
- Property care
- Children's facilities
- Resort rental services





# MINTHIS

—— Pafilia ——

This offer is subject to the following terms and conditions.

Valid for a period of 14 (fourteen) days from the present date. After the expiration of the Term, Pafilia retains the right to amend the prices included in the offer at any point without notice. This offer is subject to availability and payment of a reservation deposit to be agreed with the Vendors. Pafilia retains the right at all times, to withdraw the offer in the event where a third party reserves the relevant property with a down payment. Pafilia Group shall not be held responsible for any loss, damage or inconvenience caused as a result of the withdrawal of the offer as herein above provided.